

# Eruyt Village

Hitoshi Sakimoto

Flute

Flute

Glockenspiel

Triangle

Drumset

Harp

Violins

Violins

Violas

Violoncellos

Contrabasses

Voice

Fl.

Fl.

Glock.

Trgl.

D. Set

Hrp.

Vlins.

Vlins.

Vlas.

Vcs.

Cbs.

Vo.

Measures 1-6 of the musical score. The Harp (Hrp.) part is active, playing a repeating eighth-note pattern in the right hand and sustained chords in the left hand. The other instruments (Fl., Glock., Trgl., D. Set, Vlins., Vlas., Vcs., Cbs., Vo.) are mostly silent, with the Triangle (Trgl.) playing a single note in measures 2, 4, and 6. The Flute (Fl.) part has a melodic line starting in measure 4.

12

Fl. 1

Fl. 2

Glock.

Trgl.

D. Set

Hrp.

Vlns. I

Vlns. II

Vla.

Vcs.

Cbs.

Vo.

Detailed description: This page of a musical score contains measures 12 through 17. The key signature has five flats (B-flat, E-flat, A-flat, D-flat, G-flat), and the time signature is 3/8. The instruments are arranged in a standard orchestral layout. Flute 1 (Fl. 1) has a melodic line starting in measure 12 with a half note, followed by eighth notes and a sixteenth-note triplet in measure 17. Flute 2 (Fl. 2), Glockenspiel (Glock.), Triangle (Trgl.), Double Snare (D. Set), Violins I (Vlns. I), Violins II (Vlns. II), Viola (Vla.), Violoncello (Vcs.), and Contrabass (Cbs.) are all marked with rests throughout the entire passage. The Harp (Hrp.) provides accompaniment with a pattern of eighth-note chords in the right hand and sustained notes in the left hand. The Voice (Vo.) part is also marked with rests.

Fl.

Fl.

Glock.

Trgl.

D. Set

Hrp.

Vlms.

Vlms.

Vlas.

Vcs.

Cbs.

Vo.

This musical score page, numbered 18, features a variety of instruments. The Flute (Fl.) part is the most active, starting with a half note and followed by a series of eighth and sixteenth notes. The Glockenspiel (Glock.) and Triangle (Trgl.) parts are mostly silent, with the triangle having a few isolated notes. The Harp (Hrp.) part is active, playing a series of eighth notes in the right hand and half notes in the left hand. The Violin (Vlms.) and Viola (Vlas.) parts are mostly silent. The Violoncello (Vcs.) and Contrabass (Cbs.) parts are also mostly silent. The Voice (Vo.) part is mostly silent.

Fl.

Fl.

Glock.

Trgl.

D. Set

Hrp.

Vlins.

Vlins.

Vlas.

Vcs.

Cbs.

Vo.

Detailed description: This page of a musical score contains measures 24 through 29. The key signature is B-flat major (two flats). The time signature is 3/4. The instruments are arranged in a standard orchestral layout. The first two Flute parts (Fl.) have melodic lines in measures 24-29. The Glockenspiel (Glock.) and Triangle (Trgl.) parts have rhythmic patterns. The Harp (Hrp.) part has a complex accompaniment. The Violin (Vlins.), Viola (Vlas.), Violoncello (Vcs.), and Contrabass (Cbs.) parts have sustained notes. The Voice (Vo.) part has a melodic line.

30

Fl.



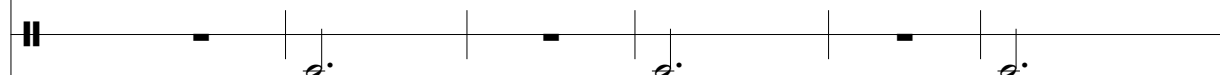
Fl.



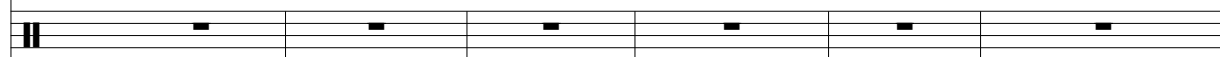
Glock.



Trgl.



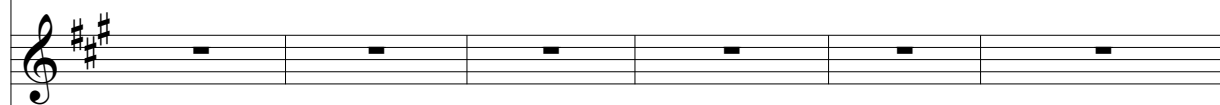
D. Set



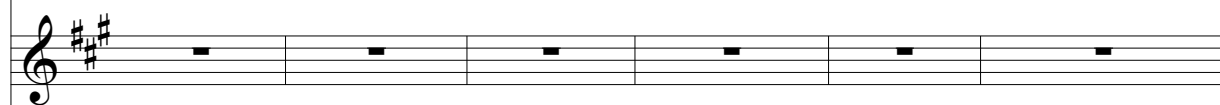
Hrp.



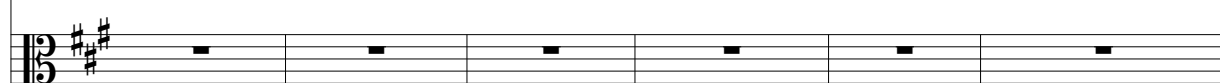
Vlins.



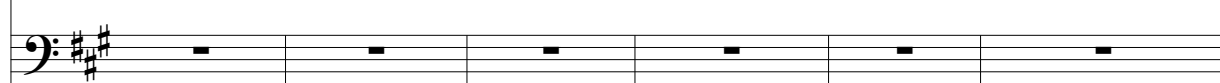
Vlins.



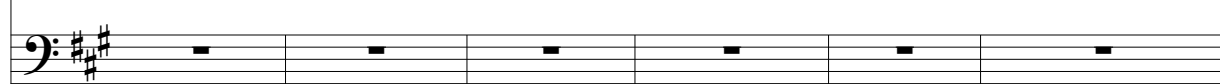
Vlas.



Vcs.



Cbs.



Vo.



36

Fl.

Fl.

Glock.

Trgl.

D. Set

Hrp.

Vlins.

Vlins.

Vlas.

Vcs.

Cbs.

Vo.

Detailed description: This page of a musical score covers measures 36 through 41. The key signature is three sharps (F#, C#, G#). The score includes parts for two Flutes (Fl.), Glockenspiel (Glock.), Triangle (Trgl.), Drums (D. Set), Harp (Hrp.), Violins (Vlins.), Viola (Vlas.), Violoncello (Vcs.), Contrabass (Cbs.), and Voice (Vo.). Measures 36-40 show the Flutes playing a melodic line with eighth and sixteenth notes, while the Glockenspiel, Triangle, and Drums are silent. The Harp provides a rhythmic accompaniment in the right hand and a sustained bass line in the left hand. Measures 36-40 also feature sustained notes in the Violins, Viola, and Violoncello. In measure 41, the Violins, Viola, and Violoncello play a half note chord, while the other instruments remain silent.

Fl.

Fl.

Glock.

Trgl.

D. Set

Hrp.

Vlns.

Vlns.

Vlas.

Vcs.

Cbs.

Vo.

The musical score for page 42, measures 1 through 6, is presented. The key signature is three sharps (F#, C#, G#). The instruments and their parts are as follows:

- Flute (Fl.):** Two staves, both showing rests in all measures.
- Glockenspiel (Glock.):** One staff showing rests in all measures.
- Triangle (Trgl.):** One staff showing rests in all measures.
- Double Bass (D. Set):** One staff showing rests in all measures.
- Harp (Hrp.):** A grand staff with a melodic line in the right hand and a sustained bass line in the left hand. The right hand plays eighth and sixteenth notes, while the left hand plays sustained half notes.
- Violins (Vlns.):** Two staves. The first staff has sustained half notes with a crescendo and decrescendo marking. The second staff has sustained half notes with a decrescendo and crescendo marking.
- Viola (Vlas.):** One staff in alto clef with sustained half notes and a decrescendo and crescendo marking.
- Violoncello (Vcs.):** One staff in bass clef with sustained half notes and a decrescendo and crescendo marking.
- Contrabass (Cbs.):** One staff showing rests in all measures.
- Voice (Vo.):** One staff showing rests in all measures.



Fl.

Fl.

Glock.

Trgl.

D. Set

Hrp.

Vlns.

Vlns.

Vlas.

Vcs.

Cbs.

Vo.

The musical score for page 48, measures 1 through 6, is presented below. The key signature is three sharps (F#, C#, G#). The flute (Fl.) and voice (Vo.) parts are mostly rests. The harp (Hrp.) part features a complex melodic line with slurs and accents. The violin (Vlns.) and viola (Vlas.) parts have active melodic lines with various articulations like slurs and accents. The cello (Vcs.) and contrabass (Cbs.) parts also have active melodic lines with slurs and accents. The triangle (Trgl.) and double bass (D. Set) parts are mostly rests.

Fl.

Fl.

Glock.

Trgl.

D. Set

Hrp.

Vlins.

Vlins.

Vlas.

Vcs.

Cbs.

Vo.

This musical score page, numbered 54, contains measures 54 through 59. The key signature is three sharps (F#, C#, G#). The instruments and their parts are as follows:

- Flutes (Fl.):** Two staves, both containing whole rests for all six measures.
- Glockenspiel (Glock.):** One staff. Measures 54-56 have whole rests. In measure 57, it plays a descending eighth-note scale: G#4, F#4, E4, D4, C#4, B3. Measures 58-59 have whole rests.
- Triangle (Trgl.):** One staff with whole rests for all six measures.
- Drum Set (D. Set):** One staff. Measures 54-56 have whole rests. In measure 57, it plays a rhythmic pattern: eighth notes G#2, A2, B2, C3, followed by a quarter rest, then eighth notes D3, E3, F#3, G#3, followed by a quarter rest. Measures 58-59 have whole rests.
- Harp (Hrp.):** Grand staff (treble and bass clefs). Measures 54-56 have melodic lines in both hands. In measure 57, the right hand has a whole rest and the left hand has a half note G#2. Measures 58-59 have whole rests in both hands.
- Violins (Vlins.):** Two staves. Measures 54-56 have half notes G#4, F#4, E4. In measure 57, they have a half note G#4. Measures 58-59 have whole rests. A crescendo hairpin is placed under the notes in measures 57-59.
- Viola (Vlas.):** One staff. Measures 54-56 have half notes G#4, F#4, E4. In measure 57, it has a half note G#4. Measures 58-59 have whole rests. A crescendo hairpin is placed under the notes in measures 57-59.
- Violoncello (Vcs.):** One staff. Measures 54-56 have half notes G#4, F#4, E4. In measure 57, it has a half note G#4. Measures 58-59 have whole rests. A crescendo hairpin is placed under the notes in measures 57-59.
- Contrabass (Cbs.):** One staff. Measures 54-56 have half notes G#4, F#4, E4. In measure 57, it has a half note G#4. Measures 58-59 have whole rests. A crescendo hairpin is placed under the notes in measures 57-59.
- Voice (Vo.):** One staff. Measures 54-56 have whole rests. In measure 57, it has a half note G#4. In measure 58, it has a half note F#4. In measure 59, it has a half note E4. A crescendo hairpin is placed under the notes in measures 57-59.

Fl. 

Fl. 

Glock. 

Trgl. 

D. Set 

Hrp. 

Vlms. 

Vlms. 

Vlas. 

Vcs. 

Cbs. 

Vo. 

Fl. 

Fl. 

Glock. 

Trgl. 

D. Set 

Hrp. 

Vlns. 

Vlns. 

Vlas. 

Vcs. 

Cbs. 

Vo. 

Fl. 

Fl. 

Glock. 

Trgl. 

D. Set 

Hrp. 

Vlms. 

Vlms. 

Vlas. 

Vcs. 

Cbs. 

Vo. 

Fl. 

Fl. 

Glock. 

Trgl. 

D. Set 

Hrp. 

Vlins. 

Vlins. 

Vlas. 

Vcs. 

Cbs. 

Vo. 